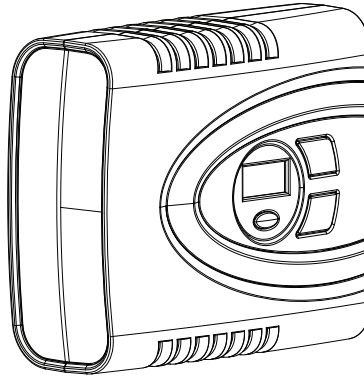


ACTIVEPRODUCTS

MULTI-FUNCTION Air Compressor

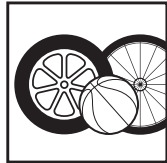
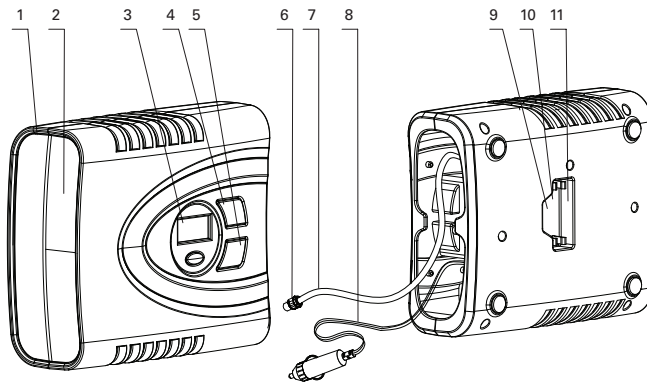
OWNER'S MANUAL



MODEL NO: RCP-C62A

KEEP THE ORIGINAL BOX, PACKAGING AND RECEIPT. BEFORE OPERATING THIS UNIT, READ THE MANUAL THOROUGHLY AND RETAIN IT FOR FUTURE REFERENCE.

AIR COMPRESSOR



HIGH-PRESSURE APPLICATIONS

- Car tires
- Bicycle tires
- Basketball
- Sporting equipment
- Party balloons

1. Multifunction air compressor
2. Built-in LED light
3. Built-in digital pressure gauge
4. On/off switch
5. Light switch
6. Thread connector
7. Pressure hose
8. 12V car cigarette lighter adapter (3.4 m cable)
9. Adapter holder
10. Balloon adapter
11. Ball adapter

INFLATION INSTRUCTION

HIGH-PRESSURE AIR COMPRESSOR

The Air Compressor has been specially designed for simple and fast inflation of car tires, bicycle tires, basketball, sporting equipment, and party balloons. The air compressor provides a small quantity of air at a relatively high pressure.

INFLATING A CAR TIRE AND BICYCLE TIRE

1. Roll out the 12V cord and connect the 12V car cigarette lighter adapter to the cigarette lighter socket in your car.
2. Screw the thread connector onto tire's valve stem.
3. Operate the air compressor until the desired pressure is reached.
4. Remove the thread connector from the tire and disconnect the 12V car cigarette lighter adapter.

Note: To avoid over-inflation of tires, please check the recommended car tire pressure in the vehicle's owner's manual. For bicycle tire, please check the tire marking.

INFLATING SPORTING EQUIPMENT (I.E. BASKETBALL) OR PARTY BALLOONS

1. Roll out the 12V cord and connect the 12V car cigarette lighter adapter to the cigarette lighter socket in your car.
2. Screw the ball/balloon adapter into the thread connector.
3. Insert the ball/balloon adapter into valve of the object to be inflated.
4. Operate the air compressor until the desired firmness is reached, or the object is fully inflated.
5. Pull ball/balloon adapter from the inflated object's valve and unscrew ball/balloon adapter from the thread connector.
6. Disconnect the 12V car cigarette lighter adapter from the cigarette lighter socket and store the 12V cord into the compartment area.

Note: If a pressure reading is required during inflation, the built-in pressure gauge will provide an estimated reading only.

INFLATION INSTRUCTION

⚠ CAUTION ⚠

- Do not run the air compressor continuously for more than 15 minutes. After each 15 minutes, allow it to cool for a minimum of 15 minutes.
- Do not leave the air compressor unattended while in operation. Keep out of reach of children.
- Do not exceed maximum pressure of 120 psi.
- The built-in pressure gauge will provide an estimated reading only. Please use a digital pressure gauge for more accuracy pressure information.

GENERAL SAFETY MEASURES

GENERAL SAFETY MEASURES AND PRECAUTIONS THAT APPLY TO THE USE OF AIR COMPRESSOR/INFLATOR.

The following instructions apply to both the air compressor and air inflator.

Safe operation of the air compressor and inflator require that you read the instructions and safety precautions carefully and follow all instructions before using the air compressor or inflator.

1. The air compressor and inflator are designed for occasional use. Inflation over a long period will overheat the air compressor or air inflator and may cause damage.
2. The air compressor and inflator must not operate for more than 15 minutes at a time, after which it must be switched off and set aside to cool for at least 15 minutes before restarting.
3. If the air compressor or inflator emits abnormal sounds or overheats, turn it off immediately and let it cool off for minimum 30 minutes.
4. Inspect air compressor, inflator and batteries before use. If cracked, broken or damaged parts are found, qualified technicians should repair damaged parts.
5. Incorrect use of air compressor/ inflator may result in personal injury and/or property damage.
6. Never expose the air compressor, inflator or battery to rain, frost or temperatures above 50 °C (122 °F). Never charge the battery in humid or wet locations.
7. Never use the air compressor or inflator near flammable fluids or gases. Make sure your working area is well-lit.
8. Protect yourself against electric shock. Avoid physical contact with grounded surfaces such as pipes, radiators, electric stoves, refrigerators, etc.
9. Never allow children to connect/ disconnect the air compressor or inflator to/from power sources. Never leave children unattended with the air compressor or inflator and never allow them to play with the accessories.

GENERAL SAFETY MEASURES

10. Never allow anyone to pump air into mouth, ears, nose, etc of people, or animals. The air compressor/inflator is not a toy.
11. Store air compressor and inflator in a secure location. If the air compressor/inflator for long periods of time, it should be stored in a dry space inaccessible to children.
12. Regularly check the charger cord. Never carry the charger by the cord and never pull the plug out of the outlet by jerking the cord. Make sure the cord is not exposed to hot objects, oil or sharp edges.
13. Keep the air compressor and inflator clean to maintain maximum output and safety. Examine the plug, charger and cable pack at regular intervals and have them repaired by qualified technicians if they are damaged.
14. Unplug the 12V car cigarette lighter adapter from the cigarette lighter socket in your car when is not in use.
15. **Warning!** For your own safety, you should only use accessories and parts specified in the instructions, or recommended for use by the manufacturer. Use of accessories and other parts that are not mentioned in the instructions may entail an increased risk for the user of the air compressor and inflator.

WARRANTY

This Active Products equipment carries a one-year limited warranty against defects in manufacturing workmanship.

This Limited Warranty shall be limited to the repair or replacement of parts which prove defective under normal use and service and which on examination shall indicate, to Active Product's satisfaction, they are defective. Active Products reserves the right to request the return of defective parts. Shipping charges may apply.

The foregoing warranty does not apply to defects resulting from faulty installation, operation, disassembly, alterations or remodeling, or misuse, misapplication, neglect, abuse, accident, tornado, hurricane, and earthquake; or lack of proper maintenance, cleaning and care.

Warranty will not apply if this product is used for commercial or rental purposes. This warranty shall not extend to anyone other than the original purchaser of this product.

ACTIVEPRODUCTS

MULTI-FUNCTION
Air Compressor

Imported by:
Active Products Inc.
Toronto, Ontario, Canada M3B 2M3
www.activeproducts.com